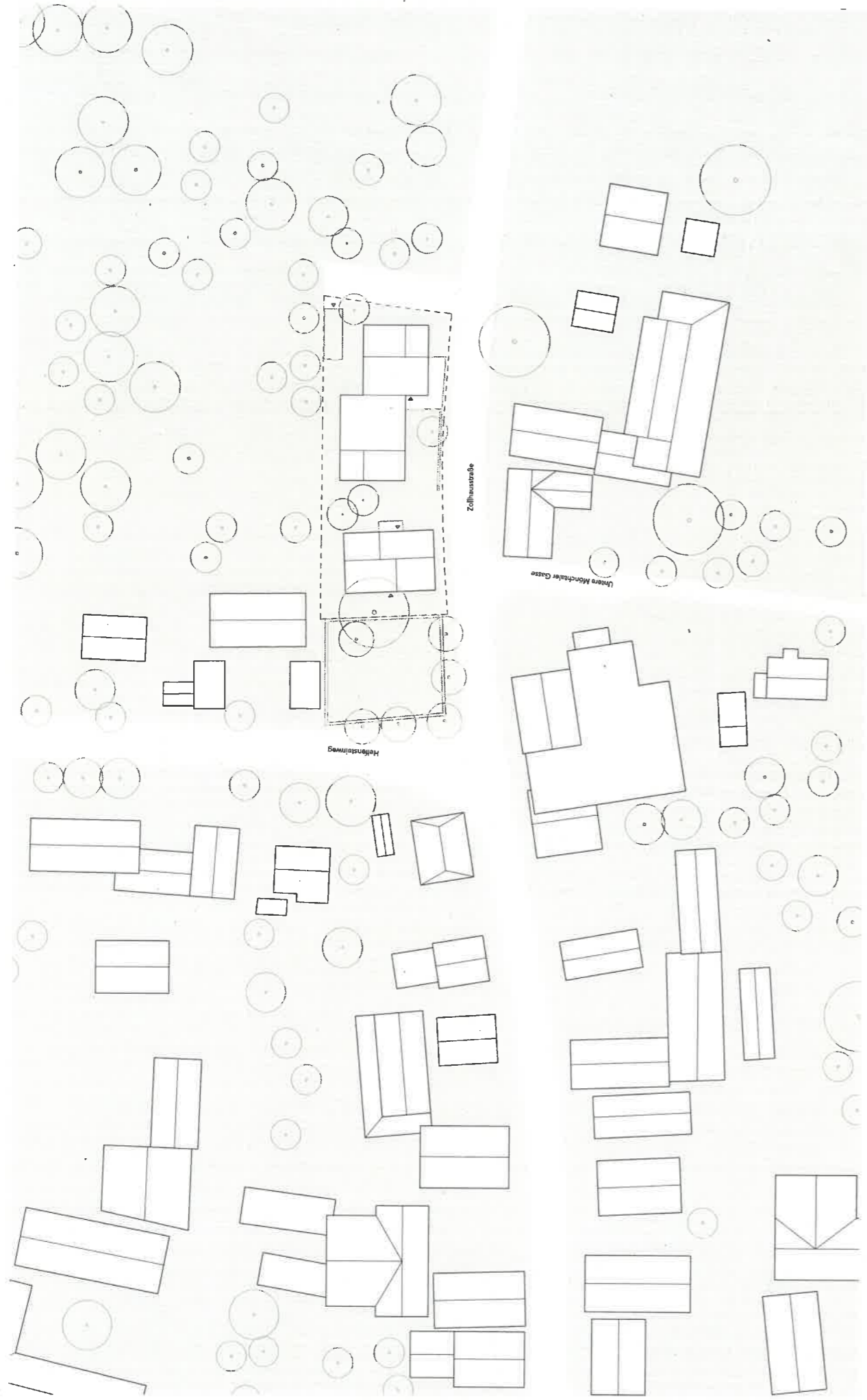
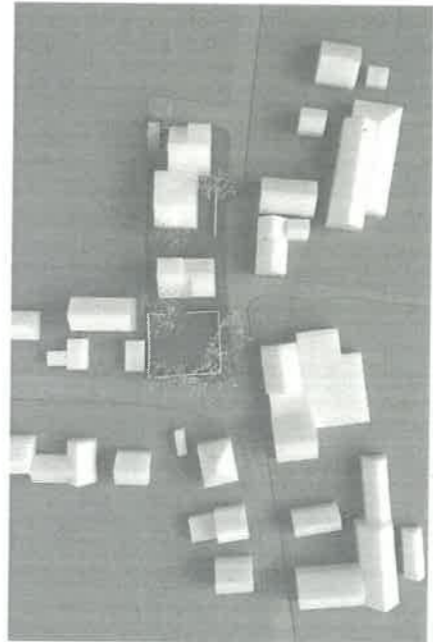
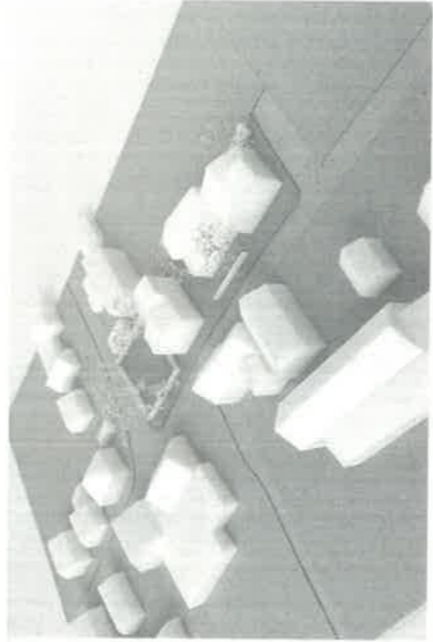


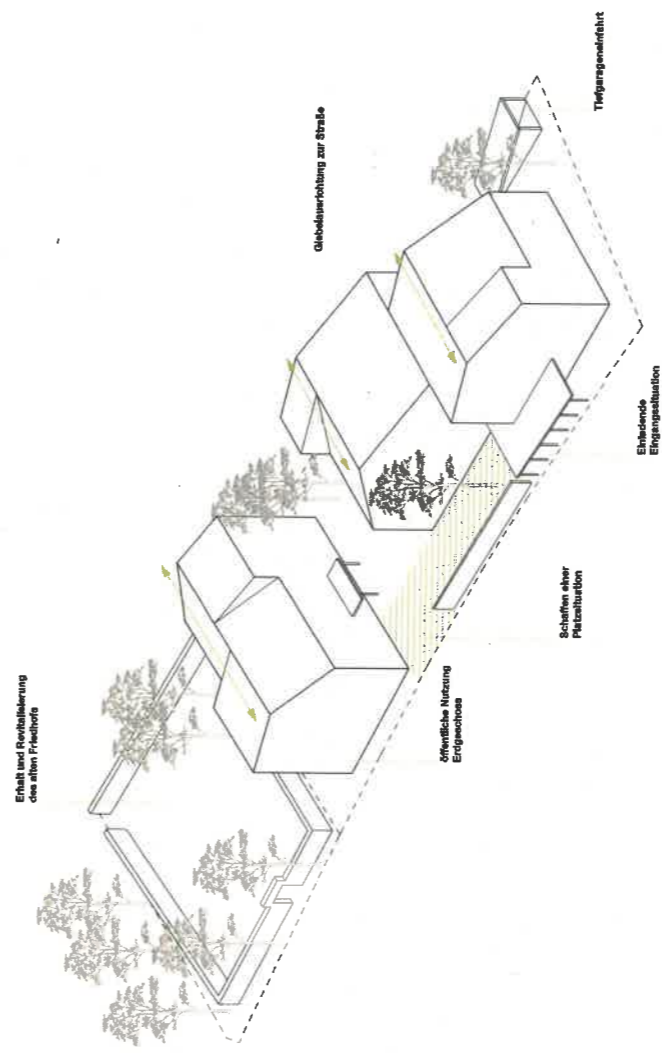
**ÜBERARBEITUNG WOHNBEBAUUNG BEIM ALTEN FRIEDHOF IN WIPPINGEN**



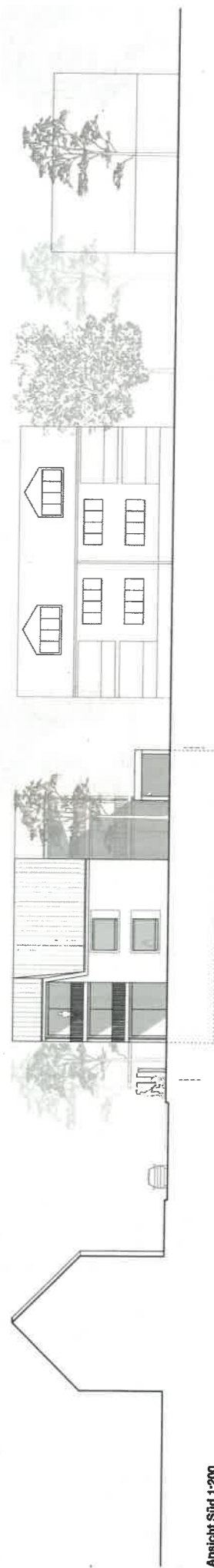
Lageplan 1:500



Modellfotos

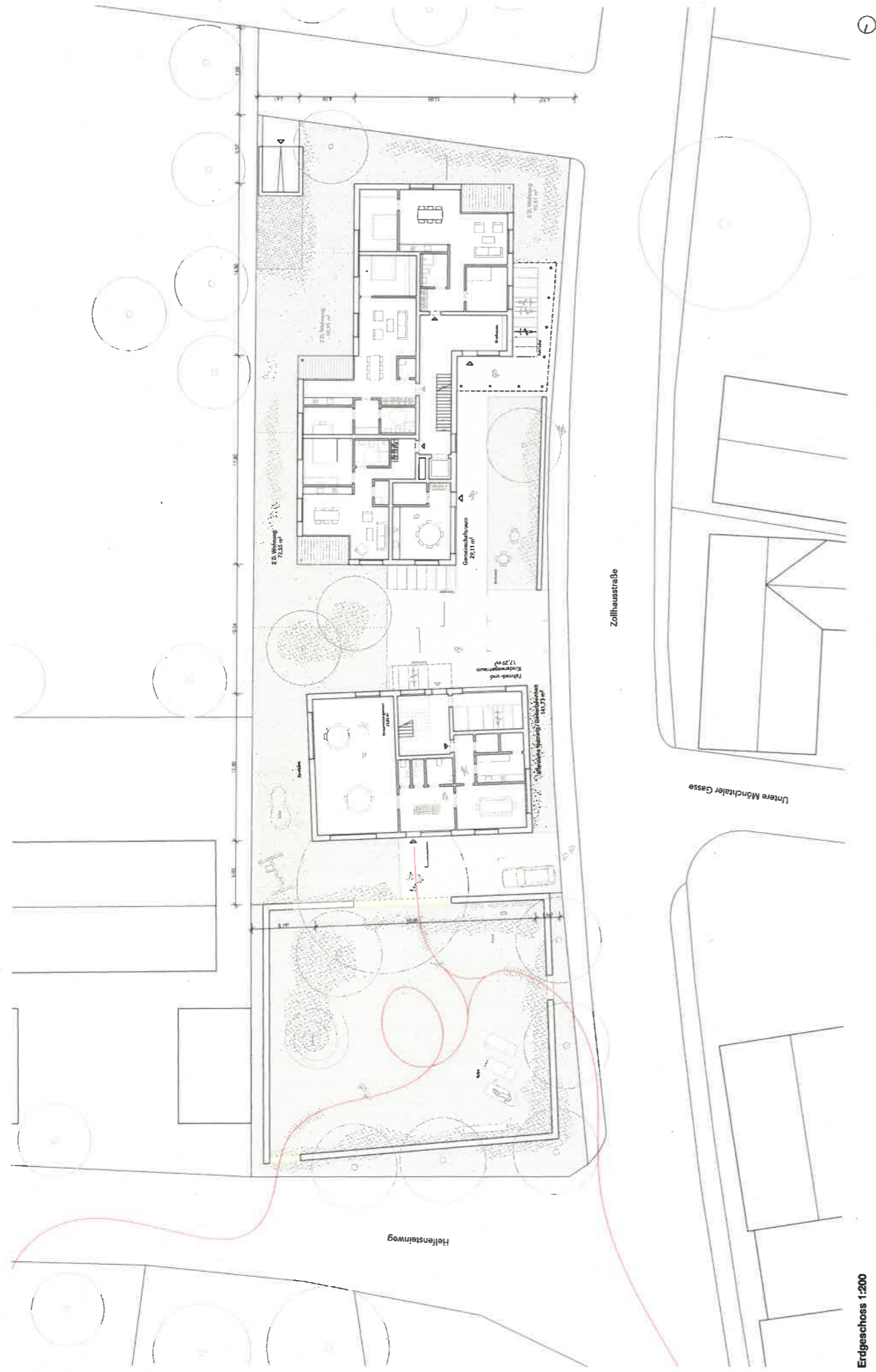


Isometrie Konzept



Ansicht Süd 1:200

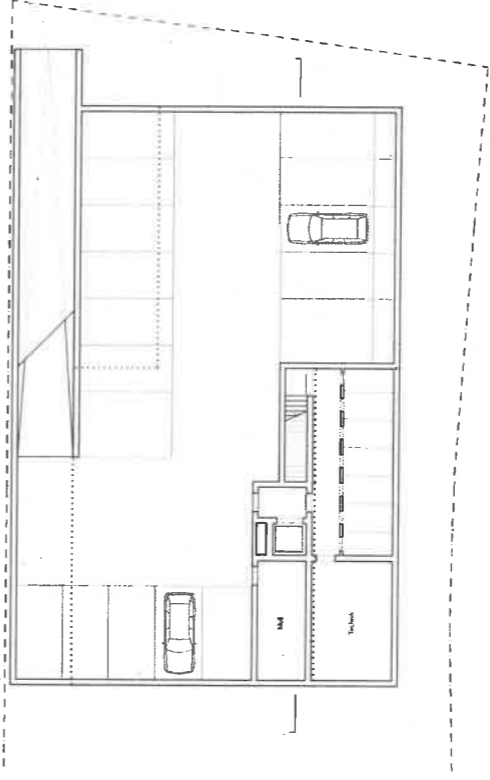




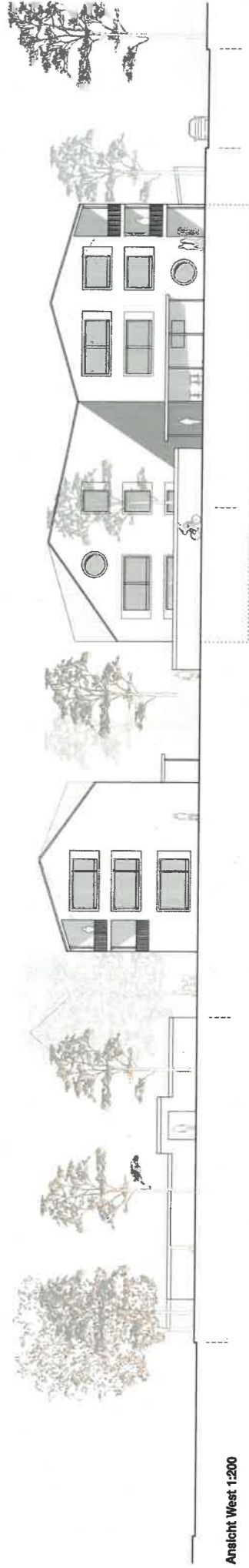
Erdgeschoss 1:200



Schwarzplan 1:3333



Untergeschoss 1:200

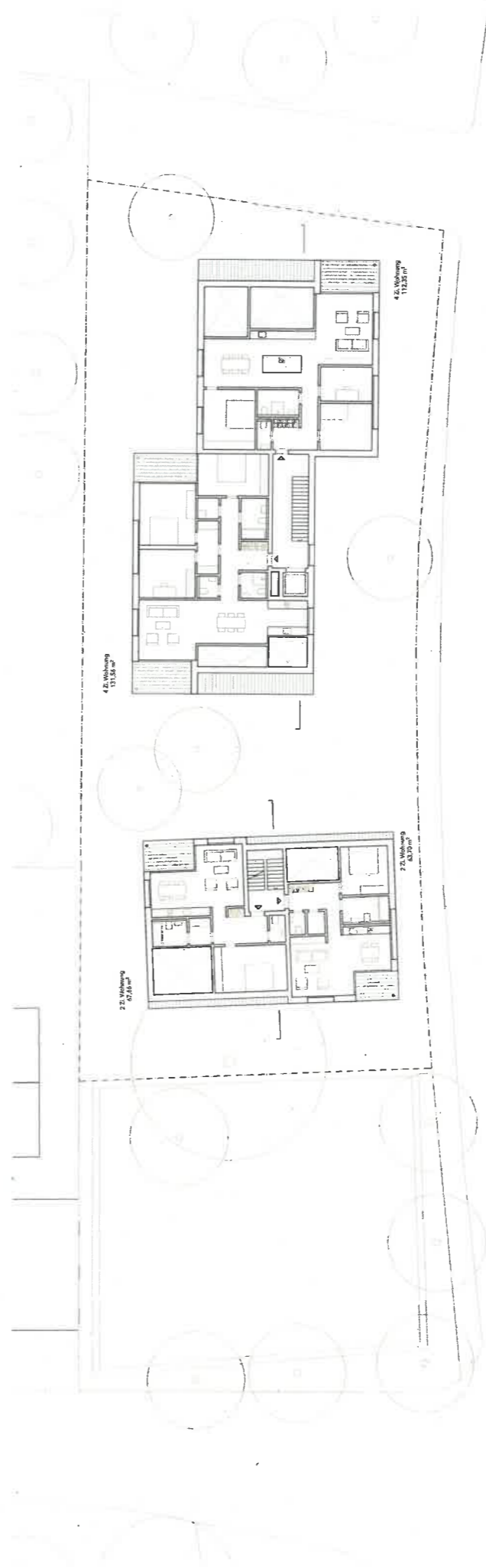


Ansicht West 1:200

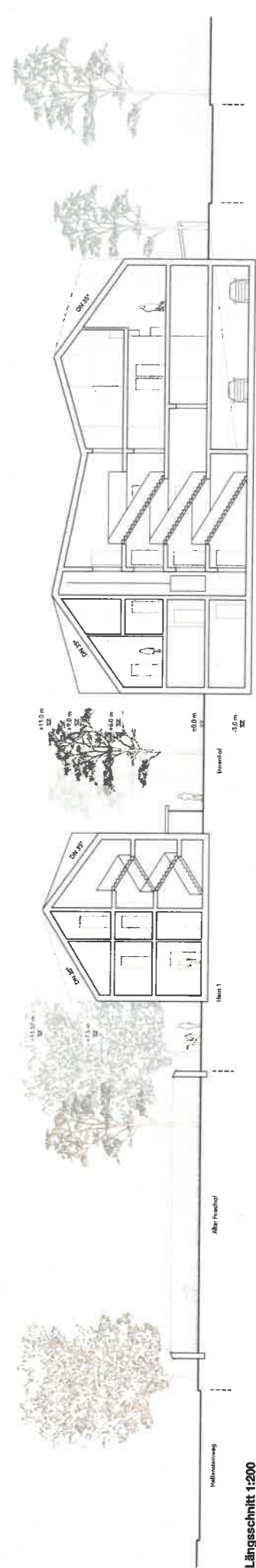




Obergeschoss 1:200



Dachgeschoss 1:200



Längsschnitt 1:200

